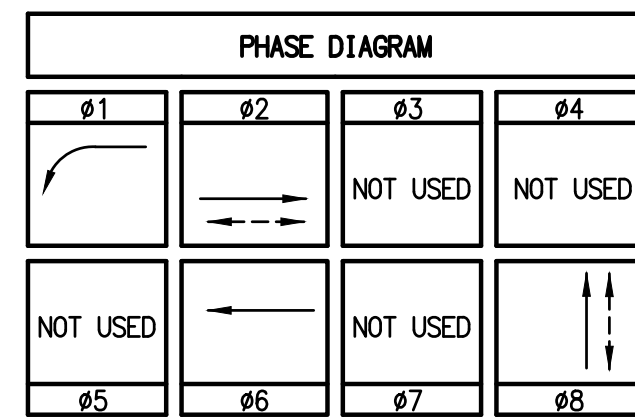
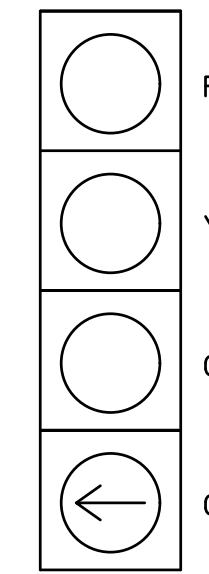
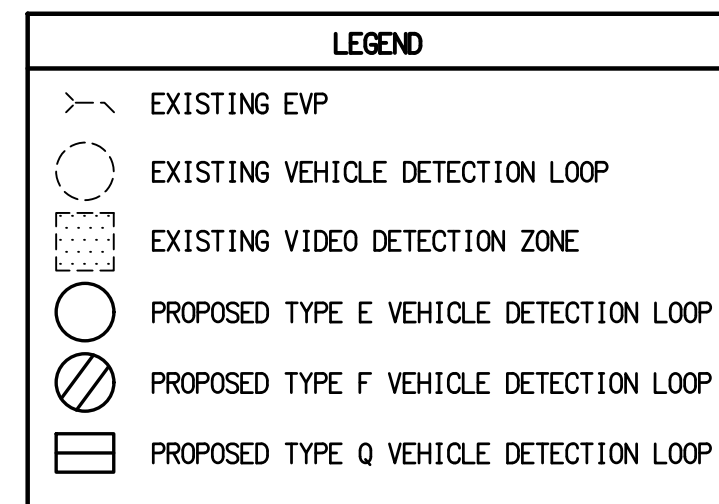


* CONDUCTOR SCHEDULE		CONDUIT RUNS						
ANG OR CABLE SIZE	POLE OR CIRCUIT	1	2	3	4	5	6	7
12 CSC	POLE A' #1, #6, #8	1	1	1	1	1	1	1
	POLE B' #8	1	1	1	1	1	1	1
	POLE C #8P, #8PPB	1	1	1	1	1	1	1
	POLE D #2, #2P, #8P, #2PPB, #8PPB	1	1	1	1	1	1	1
3 CSC	POLE E #1, #2, #2PPB	1	1	1	1	1	1	1
	TOTAL	1	2	3	4	5	6	7
#10	SAFETY LIGHTING (LTG)	2	2	2	2	2	2	2
#8	GROUND (GND)	1	1	1	1	1	1	1
#6	SERVICE (SVC)						2	2
TYPE B DLC	#1			1			1	1
	#2				6		6	6
	#6				5		5	5
	TOTAL DLCs			6	6	12	12	12
	EVP CABLE (3M MODEL 138 CABLE)	1	2	2		3	3	
	VIDEO DETECTION COAX CABLE	1	1			1	1	
	VIDEO DETECTION 3C/#16 POWER CABLE	1	1			1	1	
	SIGNAL INTERCONNECT (6PR#20)				1	2	2	
	CONDUIT SIZE (INCHES)	3"	3"	3"	3"	2-2" 2-3"	2-2" 2-3"	
	CONDUIT FILL (%)	9	22	35	10	16	20	20



LOMAS SANTA FE DR POSTED SPEED = 40 MPH  
PLAZA ENTRANCE POSTED SPEED = NOT POSTED



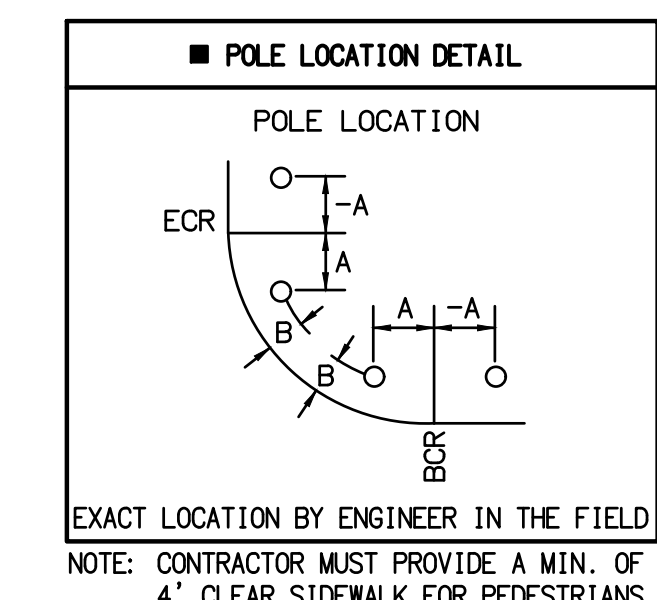
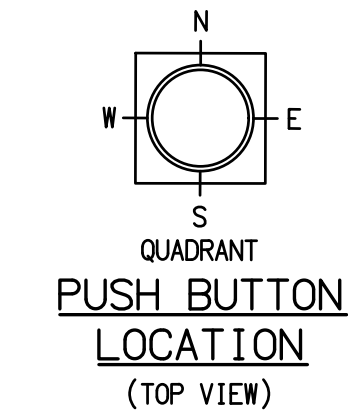
DETAIL "A"  
4-SECTION VEHICLE HEAD

* POLE AND EQUIPMENT SCHEDULE												
No.	TYPE	STANDARD			LED LUMINAIRE	SIGNAL MOUNTING			POLE LOCATION		REMARKS	
		HEIGHT	SIG. M.A.	LUM. M.A.		VEHICLE	PED	PHASE	QUAD	A		B
(A)	26-4-100	30'	40'	15'	101 W +	2-MAS	SV-2-T		SEE PLAN	3.5'	Plaza Entrance	POLE MOUNTED R9-3
(B)	17-3-100	30'	20'	15'	101 W +	1-MAS	SV-1-T		SEE PLAN	3.5'	Lomas Santa Fe Dr	ROTATE LUMINAIRE 90° AS SHOWN
(C)	1-A	7'					TP-1-T	#8P	SEE PLAN	6.5'		
(D)	24-3-129	30'	35'	15'	101 W	1-MAS	SV-1-T	SP-1-T	#8P	W	EXISTING	Plaza Entrance
(E)	15TS	30'		15'	101 W		SV-1-T	SP-1-T	#2P	N	EXISTING	

\*ALL EQUIPMENT IS EXISTING UNLESS NOTED:  
 (●) = NEW  
 (◆) = EXISTING PEDESTRIAN INDICATIONS ARE LED COUNTDOWN TYPE.  
 (▲) = PEDESTRIAN PUSHBUTTON ASSEMBLY SHALL BE APS AND ADA COMPLIANT.  
 (+) = RELOCATED

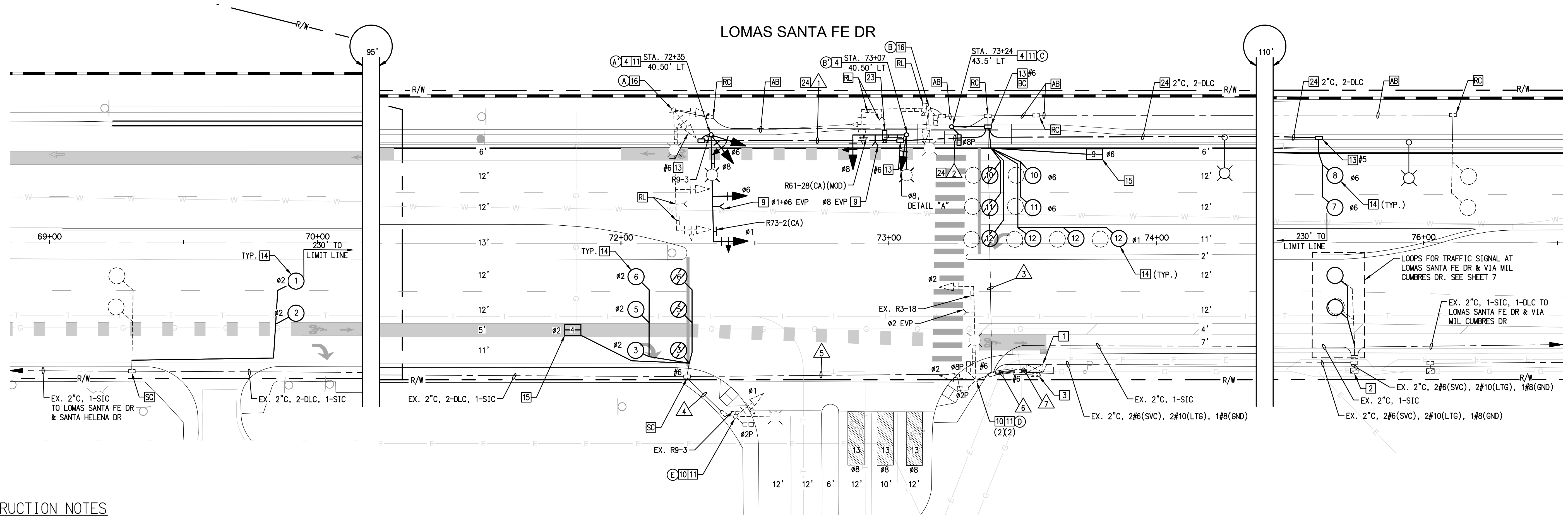
POLES TO BE [RS]			
No.	TYPE	HEIGHT	SIG. M.A.
(A)	26-4-129	30'	45'
(B)	19-3-129	30'	25'

AS FIRST ORDER OF WORK, THE CONTRACTOR SHALL POTHOLE POLE LOCATIONS PRIOR TO ORDERING POLES. IF CONFLICTS ARE FOUND DURING POTHOLING, THE CONTRACTOR SHALL IMMEDIATELY NOTIFY THE ENGINEER OF RECORD. FAILURE TO COMPLY SHALL BE AT THE SOLE RESPONSIBILITY OF THE CONTRACTOR FOR ANY LOSS OF TIME, ADDITIONAL COST, AND DAMAGE.



DETECTOR ASSIGNMENT			
DETECTOR	PHASE	SLOT	FIELD TERMINAL
1	2 ADV	I2L	T2-7 & 8
2	2 ADV	I2U	T2-5 & 6
3	2 RT	I3U	T2-9 & 10
4	2 BK	I3L	T2-11 & 12
5	2	I4U	T4-1 & 2
6	2	I4L	T4-3 & 4
7	6 ADV	J2U	T3-5 & 6
8	6 ADV	J2L	T3-7 & 8
9	6 BK	J3U	T3-9 & 10
10	6	J3L	T3-11 & 12
11	6	J3U	T5-1 & 2
12	1	I1U	T2-1 & 2
13	8	J6U/J6L J7U/J7L	VIDEO

\*ALL CONDUIT AND CONDUCTORS ARE EXISTING UNLESS NOTED:  
 (●) = NEW



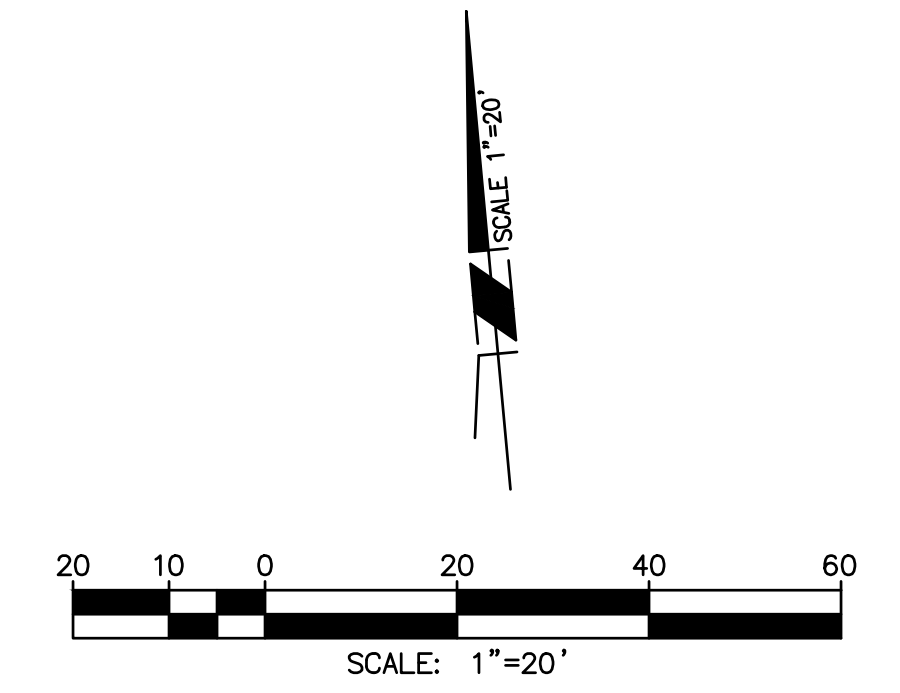
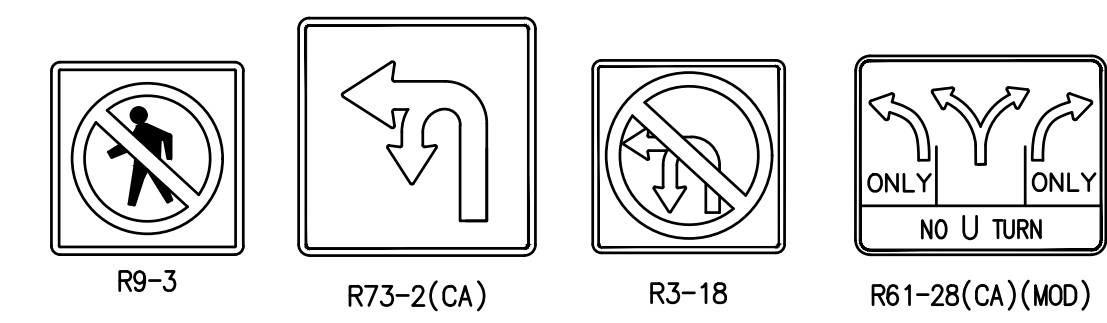
CONSTRUCTION NOTES

- EXISTING 332L CONTROLLER CABINET WITH THE FOLLOWING EXISTING EQUIPMENT: 222 DETECTOR CARDS, ITERIS ADVANTAGE EDGE 2 CARD AND MONITOR, 3M EVP CARDS (2), PDA#2, EDI 210E CONFLICT MONITOR UNIT. [RS] EXISTING MCCAIN 170E CONTROLLER. FURNISH AND INSTALL NEW MCCAIN FLEX CONTROLLER AND OMNI PROGRAM (OR APPROVED EQUAL). FURNISH AND INSTALL NEW DETECTOR CARDS AS NECESSARY. FURNISH AND INSTALL POLARA NAVIGATOR 2-WIRE (OR APPROVED EQUAL) APS CONTROL UNIT.
- EXISTING SERVICE PEDESTAL TO REMAIN.
- EXISTING BBS TO REMAIN. BBS SYSTEM IS ALPHA WITH 4 BATTERIES.
- FURNISH AND INSTALL NEW TRAFFIC SIGNAL POLE WITH FOUNDATION COMPLETE PER POLE AND EQUIPMENT SCHEDULE.
- [RL] EXISTING EVP DETECTOR ASSEMBLY TO NEW MAST ARM LOCATION PER PLAN. INCLUDE ALL NECESSARY MOUNTING AND CABLING.
- [RS] EXISTING PEDESTRIAN PUSHBUTTON ASSEMBLY.
- FURNISH AND INSTALL NEW APS PEDESTRIAN PUSHBUTTON ASSEMBLY.
- FURNISH AND INSTALL NEW PULL BOX PER PLAN. PULL BOX SHALL BE STAMPED "TRAFFIC SIGNAL".
- FURNISH AND INSTALL NEW 6' DIAMETER INDUCTION DETECTOR LOOP TYPE E, LIMIT LINE LOOP SHALL BE TYPE F, PER CALTRANS STD PLAN ES-58. PLACE IN CENTER OF LANES.
- FURNISH AND INSTALL MODIFIED 4X6 TYPE Q BICYCLE DETECTOR LOOP PER CALTRANS STANDARD PLAN ES-58. LOOP SHALL BE PLACED 40' FROM LIMIT LINE.
- [RS] EXISTING TRAFFIC SIGNAL POLE. BREAK DOWN FOUNDATION 36" BELOW GRADE. [RL] EQUIPMENT PER PLAN AND POLE AND EQUIPMENT SCHEDULE.
- [RL] EXISTING VIDEO DETECTION CAMERA TO NEW POLE. INCLUDE ALL NECESSARY MOUNTING AND CABLING.
- FURNISH AND INSTALL PVC CONDUIT WITH MULE TAPE, SIZE PER PLAN.

ABBREVIATIONS

- AB ABANDON
- ADV ADVANCE
- APS ACCESSIBLE PEDESTRIAN SIGNAL
- BK BIKE
- C CONDUIT
- DLC DETECTOR LOOP CABLE
- EVP EMERGENCY VEHICLE PREEMPTION
- EX EXISTING
- L LEFT
- NTS NOT TO SCALE
- TYP TYPICAL
- RMC RIGID METALLIC CONDUIT
- R RIGHT
- SNS STREET NAME SIGN
- SC SPLICE NEW TO EXISTING CONDUCTORS

SIGN LEGEND



PLAN CODE  
**TS-5**  
 AS-BUILT  
 By: \_\_\_\_\_ Date: \_\_\_\_\_  
 R.C.E.: \_\_\_\_\_ Exp: \_\_\_\_\_

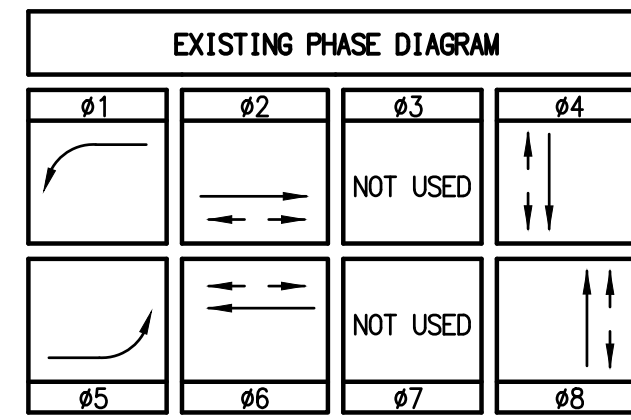
	5865 AVENIDA ENCINAS, #142B CARLSBAD, CA 92008 PH: 760-602-4290 WWW.STCTRFFIC.COM	ENGINEER OF WORK	CITY APPROVED CHANGES	APP'D DATE	RECOMMENDED FOR APPROVAL	APPROVED FOR CONSTRUCTION	BENCH MARK	<b>CITY OF SOLANA BEACH</b> IMPROVEMENT PLANS FOR: LOMAS SANTA FE CORRIDOR: LOMAS SANTA FE & PLAZA ENTRANCE	ENGINEERING DEPARTMENT	DRAWING NO.
		CHRISTIAN J. LAMBARTH RCE 86675			By: _____ Date: _____	By: Mohammad Sammak, City Engineer R.C.E.: 37146 Exp: 6/30/22			DESCRIPTION: LOCATION: ELEV.: DATUM: M.S.L.	

100% PLANS - DECEMBER 10, 2021. NOT FOR CONSTRUCTION

Dec 09, 2021 6:35pm R:\Shared With Me\STC Data\Projects\Michael Baker\20.0853\_Lomas Santa Fe TS Mods\07\_Engineering\CADD\DW\20.0583\_DLV\_05\_TS.dwg

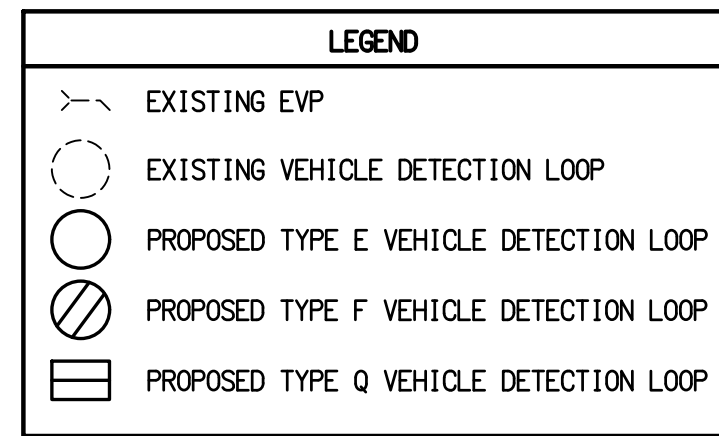
* CONDUCTOR SCHEDULE													
AWG OR CABLE SIZE	POLE OR CIRCUIT	CONDUIT RUNS											
		1	2	3	4	5	6	7	8				
12 CSC	POLE A	Ø4, Ø4P, Ø8, Ø2PPB											
	POLE B	Ø1, Ø2P, Ø4PPB											
	POLE C	Ø1, Ø6, Ø6P, Ø4PPB	1	1	1	1	1	1	1	1			
	POLE D	Ø8, Ø4P, Ø6PPB	1	1	1	1	1	1	1	1			
	POLE E	Ø8, Ø8P, Ø6PPB	1	1	1	1	1	1	1	1			
	POLE F	Ø5, Ø6P, Ø8PPB	1	1	1	1	1	1	1	1			
	POLE G	Ø2, Ø5, 2P, Ø8PPB			2	1	2	1	2	1			
3 CSC	POLE H	Ø4, Ø8P, Ø2PPB											
	TOTAL		2	2	2	2	3	4	6	5	7	8	7
#12	IISNS		2	2	2	2	2	2	2	2	2	2	2
#10	SAFETY LIGHTING (LTG)		2	2	2	2	2	2	2	2	2	2	2
#8	GROUND (GND)		1										
#6	SERVICE (SVC)												2
TYPE B DLC	Ø1						1	1	1	1	1	1	1
	Ø2												4
	Ø4				2	2	2	2	2	2	2	2	2
	Ø5												1
	Ø6							4	4	4	4	4	4
TOTAL DLCs			2	2	2	2	7	7	9	9	13	13	13
	EVP CABLE (3M MODEL 138 CABLE)		1	1	1	1	2	3	3	4	4	4	4
SIGNAL INTERCONNECT (6PR#20)													1
CONDUIT SIZE (INCHES)			3"	3"	3"	3"	3"	2"	2"	2"	2"	2"	2"
CONDUIT FILL (%)			20	31	21	29	43	42	35	39	4	4	4

\* ALL CONDUIT AND CONDUCTORS ARE EXISTING UNLESS NOTED:  
 (●) = NEW  
 (RMC) = RIGID METALLIC CONDUIT



LOMAS SANTA FE DR POSTED SPEED = 40 MPH  
 VIA MIL CUMBRES DR/LAS BANDERAS DR POSTED SPEED = 25 MPH

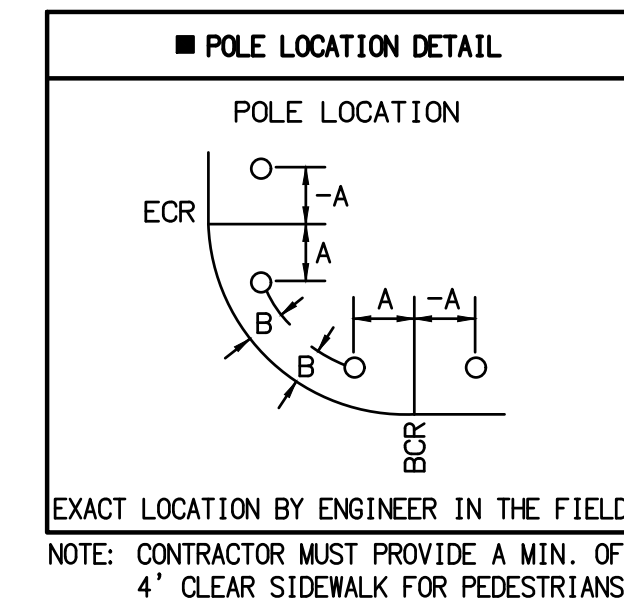
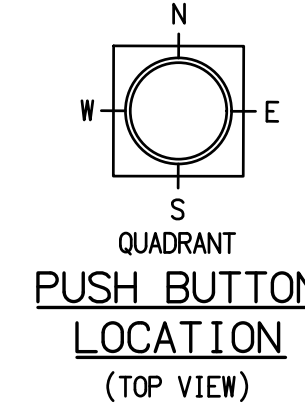
AS FIRST ORDER OF WORK, THE CONTRACTOR SHALL POT-HOLE POLE LOCATIONS PRIOR TO ORDERING POLES. IF CONFLICTS ARE FOUND DURING POT-HOLING, THE CONTRACTOR SHALL IMMEDIATELY NOTIFY THE ENGINEER OF RECORD. FAILURE TO COMPLY SHALL BE AT THE SOLE RESPONSIBILITY OF THE CONTRACTOR FOR ANY LOSS OF TIME, ADDITIONAL COST, AND DAMAGE.



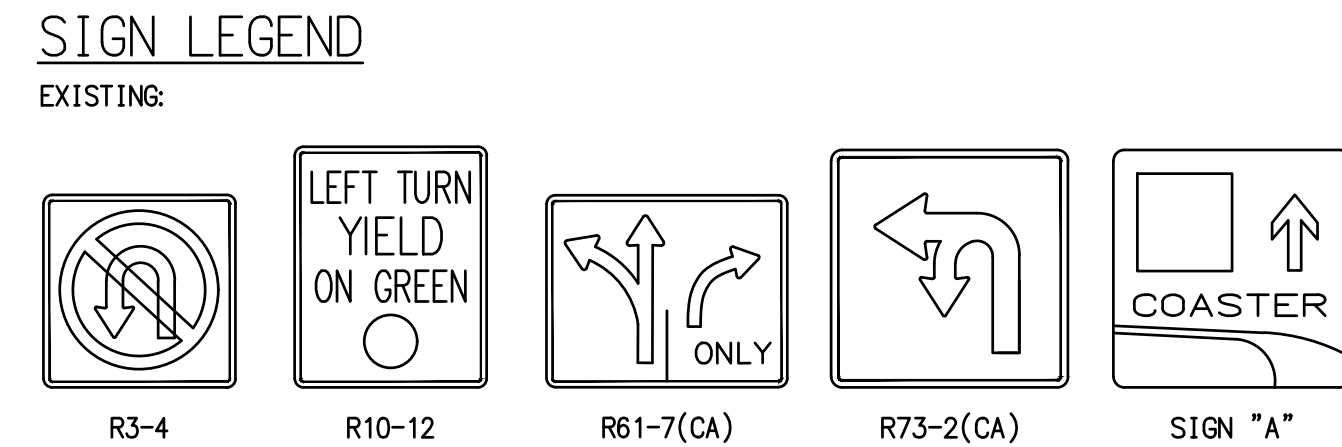
* POLE AND EQUIPMENT SCHEDULE														
No.	TYPE	HEIGHT	SIG. M.A.	LUM. M.A.	LED LUMINAIRE	SIGNAL MOUNTING		PHASE	QUAD	POLE LOCATION		IISNS	REMARKS	
						VEHICLE	PED			A	B			
(A)	17-3-70	30'	20'	15'	101 W	1-MAS	SV-2-T	SP-1-T (EX. CD)	Ø2P	N	EXISTING	Lomas Santa Fe Dr		
(B)	1-A	10'					SV-1-T	SP-1-T (EX. CD)	Ø4P	E	EXISTING			
(C)	26-4-100	30'	40'	15'	101 W	2-MAS	SV-1-T	SP-1-T	Ø4P	E	10'	5'	Via Mil Cumbre Dr	POLE MOUNTED SIGN "A"
(D)	1-A	10'					TV-1-T	SP-1-T	Ø6P	S	8'	5'		
(E)	19-4-100	30'	20'	15'	101 W	1-MAS	SV-1-T	SP-1-T	Ø6P	S	9'	5'	Lomas Santa Fe Dr	
(F)	1-A	10'					TV-1-T	SP-1-T	Ø8P	W	8'	8'		
(G)	29-5-70	30'	50'	15'	101 W	2-MAS	SV-1-T	SP-1-T	Ø8P	W	EXISTING	Las Banderas Dr		
(H)	1-A	10'					TV-1-T	SP-1-T	Ø2P	N	EXISTING			

\* ALL EQUIPMENT IS EXISTING UNLESS NOTED:  
 (●) = NEW  
 (♦) = PEDESTRIAN INDICATIONS SHALL BE LED COUNTDOWN (CD) TYPE.  
 (▲) = PEDESTRIAN PUSHBUTTON ASSEMBLY SHALL BE APS AND ADA COMPLIANT.  
 (+) = RELOCATED

POLES TO BE [RS]			
No.	TYPE	HEIGHT	SIG. M.A.
(C)	26-4-70	30'	45'
(D)	1-A	10'	
(E)	19-4-70	30'	25'
(F)	1-A	10'	



DETECTOR ASSIGNMENT			
DETECTOR	PHASE	SLOT	FIELD TERMINAL
1	2 ADV	I2L	T2-7 & 8
2	2 ADV	I2U	T2-5 & 6
3	2 BK	I3U	T2-9 & 10
4	2	I3L	T2-11 & 12
5	5	J1U	T3-1 & 2
6	4	I6U	T4-9 & 10
7	4	I6L	T4-11 & 12
8	6 ADV	J2U	T3-5 & 6
9	6 ADV	J2L	T3-7 & 8
10	6 BK	J3U	T3-9 & 10
11	6	J3L	T3-11 & 12
12	1	I1U	T2-1 & 2
13	8	J6U	T5-9 & 10

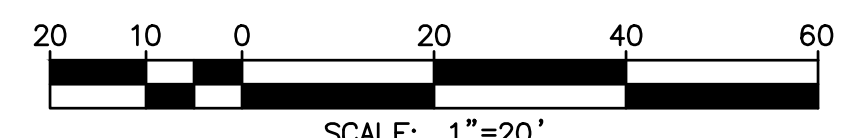
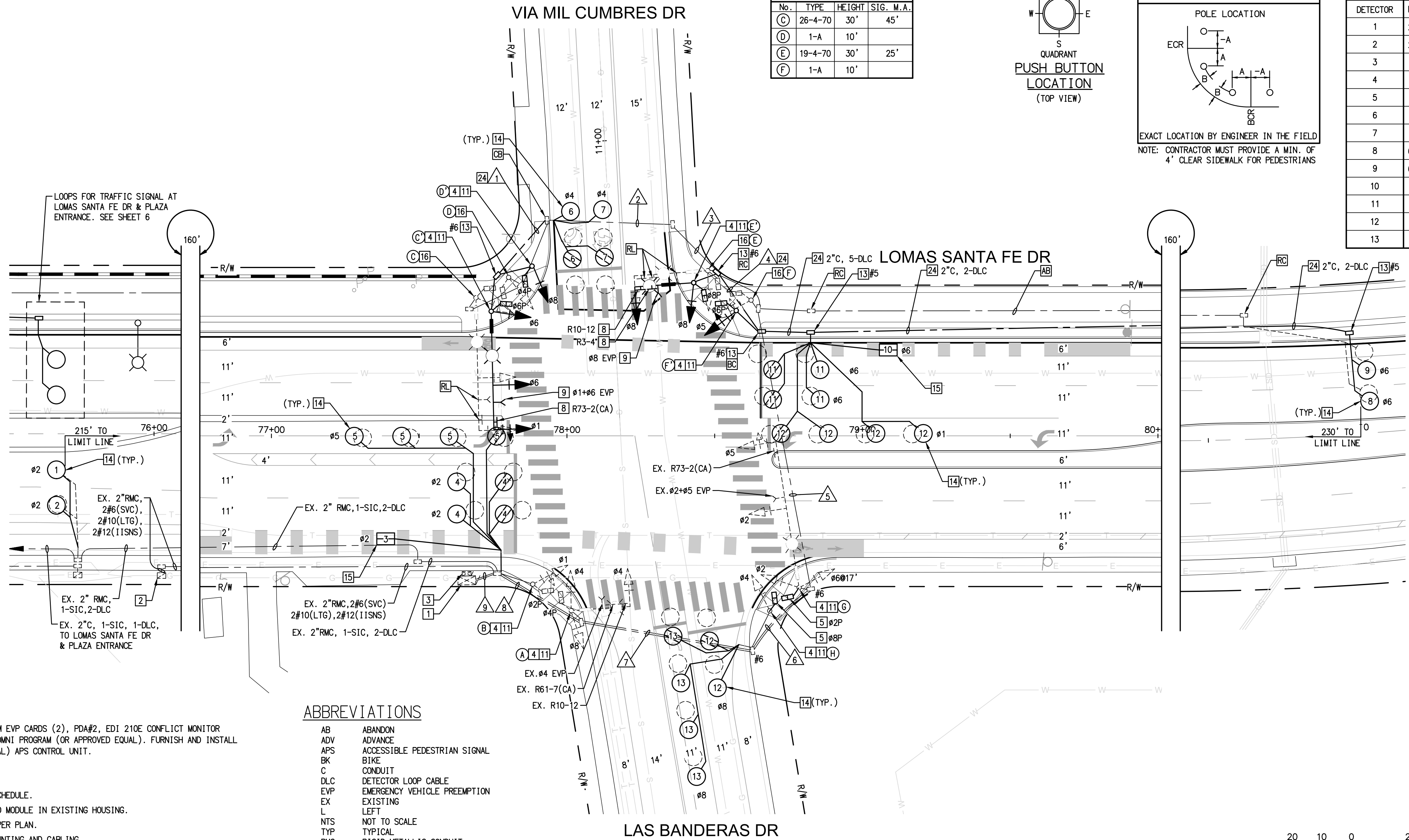


CONSTRUCTION NOTES

- EXISTING 332L CONTROLLER CABINET WITH THE FOLLOWING EXISTING EQUIPMENT: 222 DETECTOR CARDS, 3M EVP CARDS (2), POA#2, EDI 210E CONFLICT MONITOR UNIT. [RS] EXISTING MCCAIN 170E CONTROLLER. FURNISH AND INSTALL NEW MCCAIN FLEX CONTROLLER AND OMNI PROGRAM (OR APPROVED EQUAL). FURNISH AND INSTALL NEW DETECTOR CARDS AS NECESSARY. FURNISH AND INSTALL POLARA NAVIGATOR 2-WIRE (OR APPROVED EQUAL) APS CONTROL UNIT.
- EXISTING SERVICE PEDESTAL TO REMAIN.
- EXISTING BBS TO REMAIN. BBS SYSTEM IS ALPHA WITH 4 BATTERIES.
- FURNISH AND INSTALL NEW TRAFFIC SIGNAL POLE WITH FOUNDATION COMPLETE PER POLE AND EQUIPMENT SCHEDULE.
- [RS] EXISTING PEDESTRIAN HEAD MODULE. FURNISH AND INSTALL NEW LED COUNTDOWN TYPE PEDESTRIAN HEAD MODULE IN EXISTING HOUSING.
- FURNISH AND INSTALL MAST ARM MOUNTED SIGN PER CALTRANS STANDARD PLAN ES-7N, DETAIL "U". SIGN PER PLAN.
- [RL] EXISTING EVP DETECTOR ASSEMBLY TO NEW MAST ARM LOCATION PER PLAN. INCLUDE ALL NECESSARY MOUNTING AND CABLING.
- FURNISH AND INSTALL NEW APS PEDESTRIAN PUSHBUTTON ASSEMBLY.
- FURNISH AND INSTALL NEW PULL BOX PER PLAN. PULL BOX SHALL BE STAMPED "TRAFFIC SIGNAL".
- FURNISH AND INSTALL NEW 6" DIAMETER INDUCTION DETECTOR LOOP TYPE E, LIMIT LINE LOOP SHALL BE TYPE F, PER CALTRANS STD PLAN ES-5B. PLACE IN CENTER OF LANES.
- FURNISH AND INSTALL MODIFIED 4X6" TYPE Q BICYCLE DETECTOR LOOP PER CALTRANS STANDARD PLAN ES-5B. LOOP SHALL BE PLACED 40' FROM LIMIT LINE.
- [RS] EXISTING TRAFFIC SIGNAL POLE. BREAK DOWN FOUNDATION 36" BELOW GRADE. [RL] EQUIPMENT PER PLAN AND POLE AND EQUIPMENT SCHEDULE.
- FURNISH AND INSTALL PVC CONDUIT WITH MULE TAPE, SIZE PER PLAN.

ABBREVIATIONS

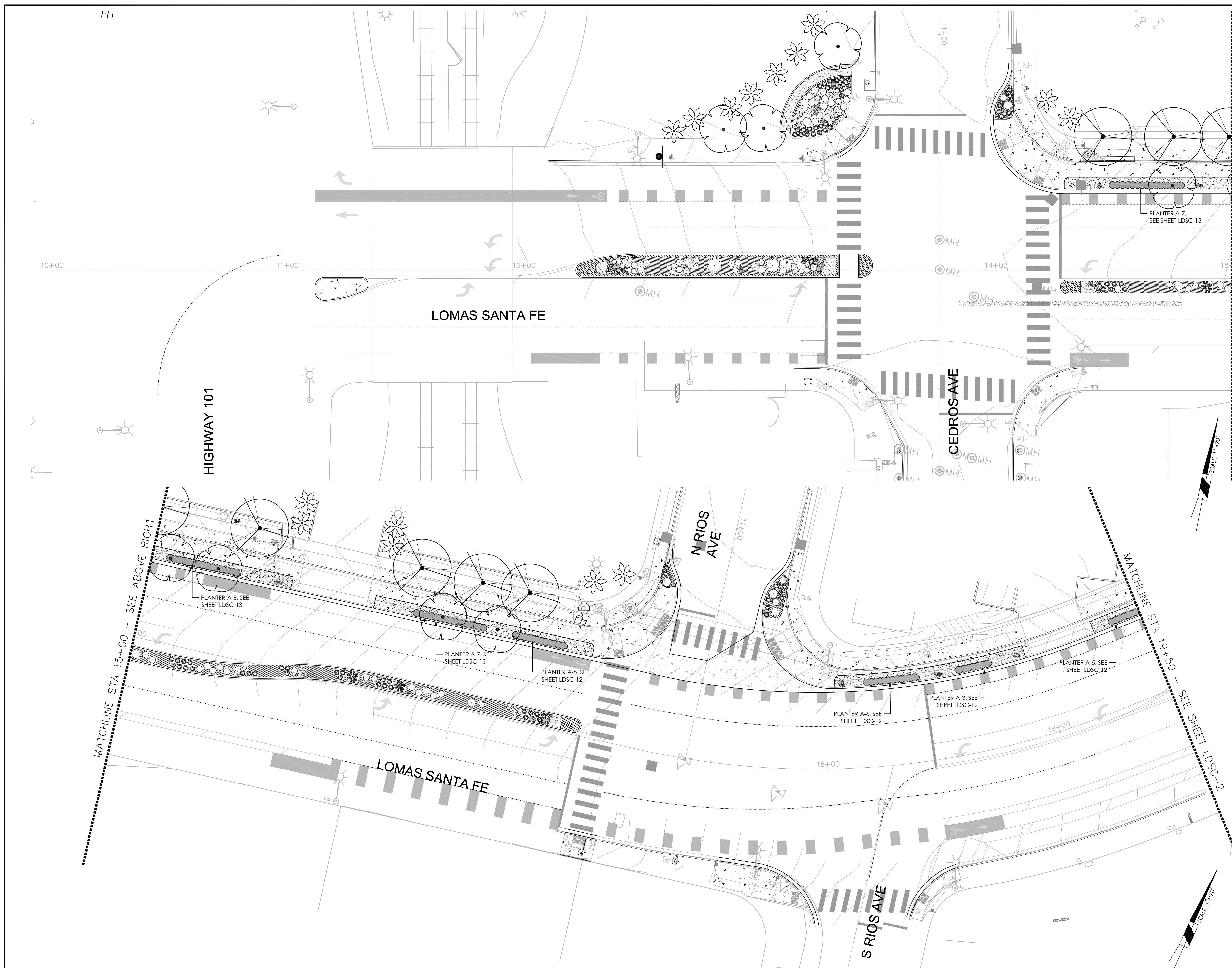
- AB ABANDON
- ADV ADVANCE
- APS ACCESSIBLE PEDESTRIAN SIGNAL
- BK BIKE
- C CONDUIT
- DLC DETECTOR LOOP CABLE
- EVP EMERGENCY VEHICLE PREEMPTION
- EX EXISTING
- L LEFT
- NTS NOT TO SCALE
- TYP TYPICAL
- RMC RIGID METALLIC CONDUIT
- R RIGHT
- SNS STREET NAME SIGN
- SC SPLICE NEW TO EXISTING CONDUCTORS



AS-BUILT  
 PLAN CODE TS-6  
 By: \_\_\_\_\_ Date: \_\_\_\_\_  
 R.C.E.: \_\_\_\_\_ Exp: \_\_\_\_\_

	5865 AVENIDA ENCINAS, #142B CARLSBAD, CA 92008 PH: 760-602-4290 WWW.STCTRFFIC.COM	ENGINEER OF WORK	CITY APPROVED CHANGES	APP'D DATE	RECOMMENDED FOR APPROVAL	APPROVED FOR CONSTRUCTION	BENCH MARK	CITY OF SOLANA BEACH IMPROVEMENT PLANS FOR: LOMAS SANTA FE CORRIDOR: LOMAS SANTA FE & LAS BANDERAS	ENGINEERING DEPARTMENT	DRAWING NO.	
		CHRISTIAN J. LAMBARTH RCE 86675				By: _____ Date: _____	By: Mohammad Sammak, City Engineer R.C.E.: 37146 Exp: 6/30/22				
								ELEV: _____ DATUM: M.S.L.	Sheet 56 of 73		





PLANT SCHEDULE				
TREES	BOTANICAL NAME	COMMON NAME	CONT	QTY
	[E] PALM TREE	EXISTING PALM	15 GAL	19
	[E] PALM TREE	TO BE RELOCATED	15 GAL	13
	ARBUTUS X 'MARINA'	ARBUTUS STANDARD	24"BOX	51
	BAUHINIA X BLAKEANA	HONG KONG ORCHID TREE	15 GAL	40
	CASSIA LEPTOPHYLLA	GOLD MEDALLION TREE	15 GAL	8
	HYMENOSPORUM FLAVUM	SWEETSHADE	15 GAL	10
	JACARANDA MMOSFOLIA	JACARANDA MULTITRUNK	15 GAL	65
	MAGNOLIA GRANDIFLORA 'MAJESTIC BEAUTY' TM	SOUTHERN MAGNOLIA	15 GAL	2
	TIPLANA TIPI	TIPI TREE	15 GAL	7
	X CHITALPA TASHKENTENSIS	CHITALPA	24"BOX	3
SHRUBS	BOTANICAL NAME	COMMON NAME	CONT	QTY
	ACHILLEA X 'MOONSHINE'	MOONSHINE YARROW	5 GAL	53
	AEONIUM ARBOREUM	TREE AEONIUM	5 GAL	22
	AEONIUM ARBOREUM 'ATROPURPUREUM'	TREE AEONIUM	5 GAL	11
	AGAVE AMERICANA	CENTURY PLANT	5 GAL	9
	AGAVE VILMORINIANA	OCTOPUS AGAVE	5 GAL	11
	AGAVE X 'BLUE GLOW'	BLUE GLOW AGAVE	5 GAL	21
	ALOE STRIATA	CORAL ALOE	5 GAL	28
	ANGOCANTHOS X 'BIG RED'	BIG RED KANGAROO PAW	5 GAL	53
	BULBINELLA FLORIBUNDA	BIG RED KANGAROO PAW	5 GAL	245
	CAREX TUMUKUCOLA	FOOTHILL SEDGE	5 GAL	69
	CHONDROPETALUM TECTORIUM	CAPE RUSH	5 GAL	26
	CYCAS REVOLUTA	SAGO PALM	5 GAL	9
	FESTUCA RUBRA 'MOLATE'	MOLATE RED FESCUE	5 GAL	150
	IRIS DOUGLASIANA	DOUGLAS IRIS	5 GAL	48
	JUNCUS PATENS	CALIFORNIA GRAY RUSH	1 GAL	52
	LEYMUS CONDENSATUS 'CANYON PRINCE'	NATIVE BLUE RYE	1 GAL	28
	ILMONIUM PEREZII	STATICE	5 GAL	110
	LOMANDRA LONGIFOLIA 'BREEZE'	DWARF MAT RUSH	1 GAL	52
	MUHLENBERGIA DUBIA	PINE MUHLY	5 GAL	5
	MUHLENBERGIA REGENS	DEER GRASS	1 GAL	62
	MYOPORUM PARVIFOLIUM	TRAILING MYOPORUM	5 GAL	397
	PHORMIUM 'TENAX' 'BRONZE BABY'	BRONZE BABY NEW ZEALAND FLAX	5 GAL	53
	SENECIO MANDRALISCAE 'BLUE CHALK STICKS'	SENECIO	1 GAL	361
	SEYRINCHIUM BELLUM	BLUE EYED GRASS	5 GAL	133
	YUCCA FLACCIDIA 'GOLDEN SWORD'	GOLDEN SWORD YUCCA	5 GAL	10

SYMBOL LEGEND	
[Symbol]	A: 30" x 24" x 2 1/2" - 18" x 12" DESERT SAND BOULDERS FROM SOUTHWEST BOULDERS AND STONE - SEE DETAIL F ON PAGE LDSC-17
[Symbol]	B: 6" - 8" 'MERICAN BEACH PEBBLE' COBBLES FROM SOUTHWEST BOULDER & STONE - SEE DETAIL E ON PAGE LDSC-17
[Symbol]	PAVERS - SEE DETAILS G/H ON PAGE LDSC-17
[Symbol]	DG - SEE DETAIL I ON PAGE LDSC-17
[Symbol]	WOOD MULCH - CITY PREFERRED MULCH. INSTALL PER MANUFACTURER'S RECOMMENDATIONS
[Symbol]	2" - 3" 'MERICAN BEACH PEBBLE' PEBBLE FROM SOUTHWEST BOULDER & STONE - SEE DETAIL E ON PAGE LDSC-17
[Symbol]	PLANTER AREA - REFER TO SHEET LISTED FOR DETAILS

**LOMAS SANTA FE-PLAN**

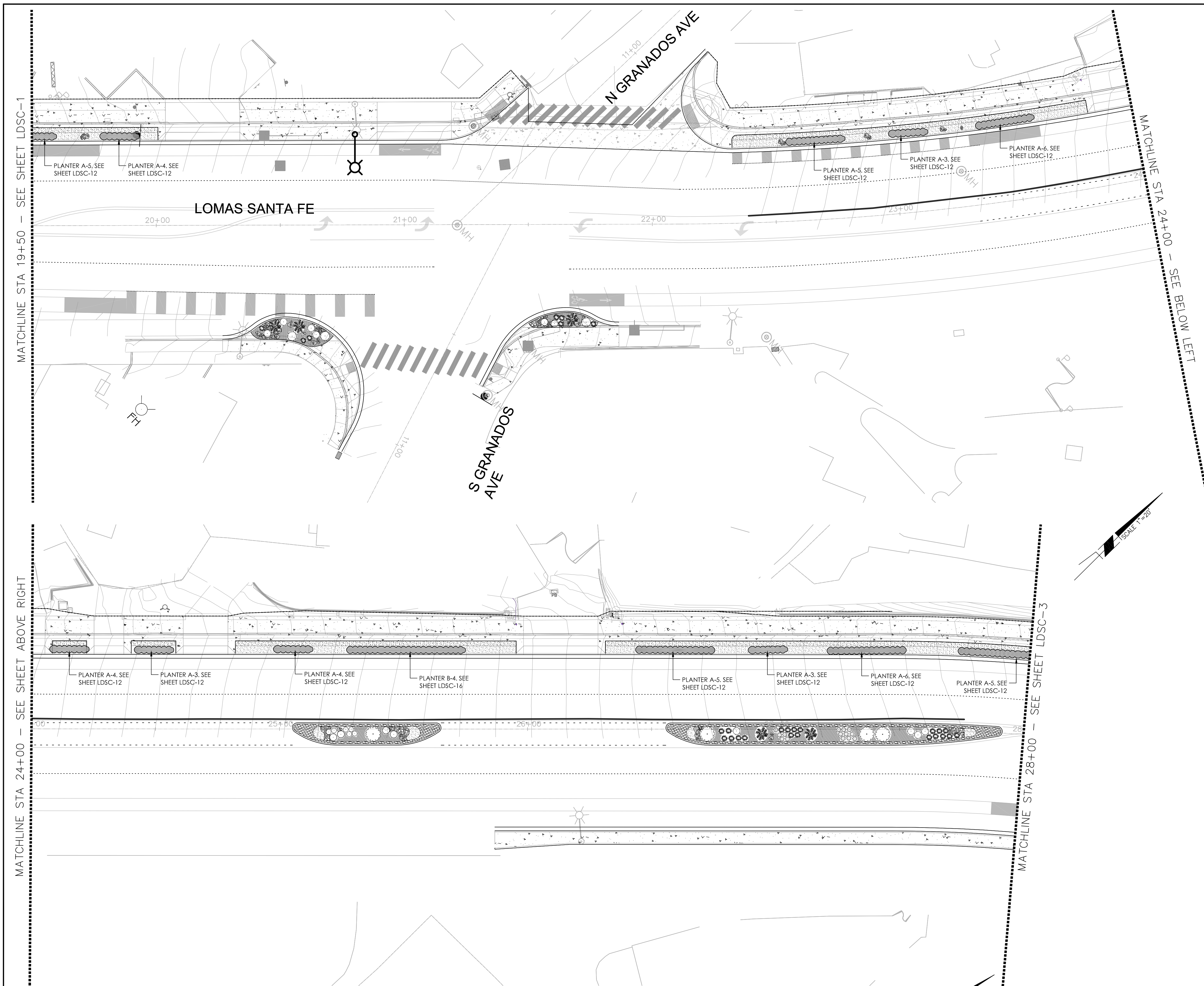
SCALE: 1" = 20'

AS-BUILT  
 PLAN CODE: LDSC-1  
 By: \_\_\_\_\_ Date: \_\_\_\_\_  
 R.C.E.: \_\_\_\_\_ Exp: \_\_\_\_\_

	ENGINEER OF WORK	CITY APPROVED CHANGES	APP'D DATE	RECOMMENDED FOR APPROVAL	APPROVED FOR CONSTRUCTION	BENCH MARK	<b>CITY OF SOLANA BEACH</b> IMPROVEMENT PLANS FOR: <b>LOMAS SANTA FE CORRIDOR</b>	ENGINEERING DEPARTMENT	DRAWING NO.
	DATE			By: _____ Date: _____	By: <b>Mohammad Sammak, City Engineer</b> R.C.E.: 37146 Exp: 6/30/22	ELEV.: _____ DATUM: M.S.L.		LANDSCAPE & PLANTING PLAN	<b>PL-1</b>

100% PLANS - DECEMBER 10, 2021. NOT FOR CONSTRUCTION





### PLANT SCHEDULE

TREES	BOTANICAL NAME	COMMON NAME	CONT	QTY
	(E) PALM TREE	EXISTING PALM	15 GAL	19
	(E) PALM TREE	TO BE RELOCATED	15 GAL	13
	ARBUTUS X 'MARINA'	ARBUTUS STANDARD	24"BOX	51
	BAUHINIA X BLAKEANA	HONG KONG ORCHID TREE	15 GAL	40
	CASSIA LEPTOPHYLLA	GOLD MEDALLION TREE	15 GAL	8
	HYMENOSPORUM FLAVUM	SWEETSHADE	15 GAL	10
	JACARANDA MMOSFOLIA	JACARANDA MULTITRUNK	15 GAL	65
	MAGNOLIA GRANDIFLORA 'MAJESTIC BEAUTY' TM	SOUTHERN MAGNOLIA	15 GAL	2
	TIPLANA TIPIU	TIPIU TREE	15 GAL	7
	X CHITALPA TASHKENTENSIS	CHITALPA	24"BOX	3
SHRUBS	BOTANICAL NAME	COMMON NAME	CONT	QTY
	ACHILLEA X 'MOONSHINE'	MOONSHINE YARROW	5 GAL	53
	AEONIUM ARBOREUM	TREE AEONIUM	5 GAL	22
	AEONIUM ARBOREUM 'ATROPURPUREUM'	TREE AEONIUM	5 GAL	11
	AGAVE AMERICANA	CENTURY PLANT	5 GAL	9
	AGAVE VILMORINIANA	OCTOPUS AGAVE	5 GAL	11
	AGAVE X 'BLUE GLOW'	BLUE GLOW AGAVE	5 GAL	21
	ALOE STRIATA	CORAL ALOE	5 GAL	28
	ANIGOZANTHOS X 'BIG RED'	BIG RED KANGAROO PAW	5 GAL	53
	BULBINELLA FLORIBUNDA	BULBINELLA	5 GAL	245
	CAREX TUMUKUCOLA	FOOTHILL SEDGE	5 GAL	69
	CHONDROPETALUM TECTORIUM	CAPE RUSH	5 GAL	26
	CYCAS REVOLUTA	SAGO PALM	5 GAL	9
	FESTUCA RUBRA 'MOLATE'	MOLATE RED FESCUE	5 GAL	150
	IRIS DOUGLASIANA	DOUGLAS IRIS	5 GAL	48
	JUNICUS PATENS	CALIFORNIA GRAY RUSH	1 GAL	52
	LEYMUS CONDENSATUS 'CANYON PRINCE'	NATIVE BLUE RYE	1 GAL	28
	LIMONIUM PEREII	STATICE	5 GAL	110
	LOMANDRA LONGIFOLIA 'BREEZE'	DWARF MAT RUSH	1 GAL	52
	MUHLENBERGIA DUBIA	PINE MUHLY	5 GAL	5
	MUHLENBERGIA RICENS	DEER GRASS	1 GAL	62
	MYOPORUM PARVIFOLIUM	TRAILING MYOPORUM	5 GAL	397
	PHORMIUM TENAX 'BRONZE BABY'	BRONZE BABY NEW ZEALAND FLAX	5 GAL	53
	SENECIO MANDRALISCAE 'BLUE CHALK STICKS'	SENECIO	1 GAL	361
	SETYRINCHIUM BELLUM	BLUE EYED GRASS	5 GAL	133
	YUCCA FLACIDA 'GOLDEN SWORD'	GOLDEN SWORD YUCCA	5 GAL	10

### SYMBOL LEGEND

	A: 30" x 24" x 2.25" DESERT SAND BOULDERS FROM SOUTHWEST BOULDERS AND STONE	- SEE DETAIL F ON PAGE LDSC17
	B: 6" x 6" x 1.5" AMERICAN BEACH PEBBLE COBBLES FROM SOUTHWEST BOULDER & STONE	- SEE DETAIL E ON PAGE LDSC17
	C: PAVERS	- SEE DETAILS G/H ON PAGE LDSC17
	D: DG	- SEE DETAIL I ON PAGE LDSC17
	E: WOOD MULCH	- CITY PREFERRED MULCH. INSTALL PER MANUFACTURER'S RECOMMENDATIONS
	F: 2" x 3" AMERICAN BEACH PEBBLE FIBBLE FROM SOUTHWEST BOULDER & STONE	- SEE DETAIL E ON PAGE LDSC17
	G: PLANTER AREA	- REFER TO SHEET LISTED FOR DETAILS

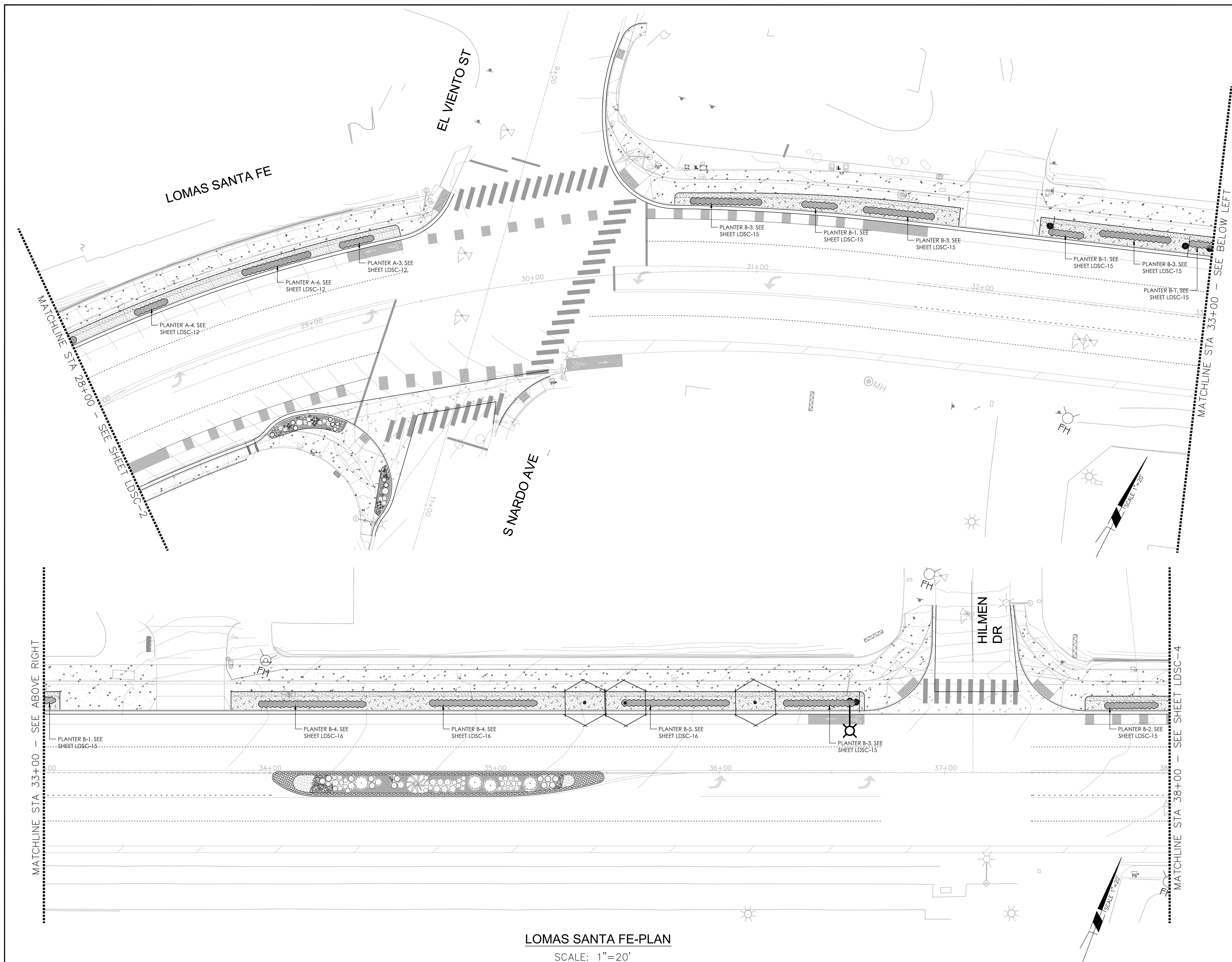
**LOMAS SANTA FE-PLAN**  
SCALE: 1"=20'

AS-BUILT  
PLAN CODE: LDSC-2  
By: \_\_\_\_\_ Date: \_\_\_\_\_  
R.C.E.: \_\_\_\_\_ Exp: \_\_\_\_\_

	ENGINEER OF WORK	CITY APPROVED CHANGES	APP'D DATE	RECOMMENDED FOR APPROVAL	APPROVED FOR CONSTRUCTION	BENCH MARK	<b>CITY OF SOLANA BEACH</b> ENGINEERING DEPARTMENT IMPROVEMENT PLANS FOR: <b>LOMAS SANTA FE CORRIDOR</b> LANDSCAPE & PLANTING PLAN	<b>PL-2</b> Sheet 58 of 73
	DATE			By: _____ Date: _____ By: _____ Date: _____	By: Mohammad Sammak, City Engineer R.C.E.: 37146 Exp: 6/30/22	ELEV.: _____ DATUM: M.S.L.		

100% PLANS - DECEMBER 10, 2021. NOT FOR CONSTRUCTION





### PLANT SCHEDULE

TREES	BOTANICAL NAME	COMMON NAME	CONT	QTY
(E) PALM TREE		EXISTING PALM	15 GAL	19
(E) PALM TREE		TO BE RELOCATED	15 GAL	13
ARBUTUS X 'MARINA'		ARBUTUS STANDARD	24"BOX	51
BAUHINIA X BLAKEANA		HONG KONG ORCHID TREE	15 GAL	40
CASSIA LEPTOPHYLLA		GOLD MEDALLION TREE	15 GAL	8
HYMENOSPORUM FLAVUM		SWEETSHADE	15 GAL	10
JACARANDA MMOSFOLIA		JACARANDA MULTITRUNK	15 GAL	65
MAGNOLIA GRANDIFLORA 'MAJESTIC BEAUTY' TM		SOUTHERN MAGNOLIA	15 GAL	2
TIPLIANA TIPI		TIPI TREE	15 GAL	7
X CHITALPA TASHKENTENSIS		CHITALPA	24"BOX	3
SHRUBS	BOTANICAL NAME	COMMON NAME	CONT	QTY
ACHILLEA X 'MOONSHINE'		MOONSHINE YARROW	5 GAL	53
AEONIUM ARBOREUM		TREE AEONIUM	5 GAL	22
AEONIUM ARBOREUM 'ATROPURPUREUM'		TREE AEONIUM	5 GAL	11
AGAVE AMERICANA		CENTURY PLANT	5 GAL	9
AGAVE VILMORINIANA		OCTOPUS AGAVE	5 GAL	11
AGAVE X 'BLUE GLOW'		BLUE GLOW AGAVE	5 GAL	21
ALOE STRIATA		CORAL ALOE	5 GAL	28
ANGOCANTHOS X 'BIG RED'		BIG RED KANGAROO PAW	5 GAL	53
BULBINELLA FLORIBUNDA		BULBINELLA	5 GAL	245
CAREX TUMUKUCOLA		FOOTHILL SEDGE	5 GAL	69
CHONDROPETALUM TECTORIUM		CAPE RUSH	5 GAL	26
CYCAS REVOLUTA		SAGO PALM	5 GAL	9
FESTUCA RUBRA 'MOLATE'		MOLATE RED FESCUE	5 GAL	150
IRIS DOUGLASIANA		DOUGLAS IRIS	5 GAL	48
JUNCUS PATENS		CALIFORNIA GRAY RUSH	1 GAL	52
LEYMUS CONDENSATUS 'CANYON PRINCE'		NATIVE BLUE RYE	1 GAL	28
ILMONIUM PEREZII		STATICE	5 GAL	110
LOMANDRA LONGIFOLIA 'BREEZE'		DWARF MAT RUSH	1 GAL	52
MUHLENBERGIA DUBIA		PINE MUHLY	5 GAL	5
MUHLENBERGIA REGENS		DEER GRASS	1 GAL	62
MYOPORUM PARVIFOLIUM		TRAILING MYOPORUM	5 GAL	397
PHORMIUM TENAX 'BRONZE BABY'		BRONZE BABY NEW ZEALAND FLAX	5 GAL	53
SENECIO MANDRALISCAE 'BLUE CHALK STICKS'		SENECIO	1 GAL	361
SEYRWICHUM BELLUM		BLUE EYED GRASS	5 GAL	133
YUCCA FLACCIDA 'GOLDEN SWORD'		GOLDEN SWORD YUCCA	5 GAL	10

### SYMBOL LEGEND

	A: 30-24\"/>	SEE DETAIL F ON PAGE LDSC-17
	B: 18-12\"/>	SEE DETAIL F ON PAGE LDSC-17
	C: 6-18\"/>	SEE DETAIL E ON PAGE LDSC-17
	PAVERS	SEE DETAILS G/H ON PAGE LDSC-17
	DG	SEE DETAIL I ON PAGE LDSC-17
	WOOD MULCH	CITY PREFERRED MULCH. INSTALL PER MANUFACTURER'S RECOMMENDATIONS
	G: 2-3\"/>	SEE DETAIL E ON PAGE LDSC-17
	PLANTER AREA	REFER TO SHEET LISTED FOR DETAILS

**LOMAS SANTA FE-PLAN**  
SCALE: 1"=20'

AS-BUILT  
PLAN CODE: LDSC-3  
By: \_\_\_\_\_ Date: \_\_\_\_\_  
R.C.E.: \_\_\_\_\_ Exp: \_\_\_\_\_

 3765 S. Higuero St., Ste. 102 • San Luis Obispo, CA 93401 P: (805) 543-7711 • F: (805) 543-4339 www.rrmdesign.com	ENGINEER OF WORK	CITY APPROVED CHANGES	APP'D DATE	RECOMMENDED FOR APPROVAL	APPROVED FOR CONSTRUCTION	BENCH MARK	<b>CITY OF SOLANA BEACH</b> IMPROVEMENT PLANS FOR: <b>LOMAS SANTA FE CORRIDOR</b>	ENGINEERING DEPARTMENT	DRAWING NO.
	DATE			By: _____ Date: _____	By: <u>Mohammad Sammak, City Engineer</u> R.C.E.: 37146 Exp: 6/30/22	ELEV.: _____ DATUM: M.S.L.		LANDSCAPE & PLANTING PLAN	<b>PL-3</b>

100% PLANS - DECEMBER 10, 2021. NOT FOR CONSTRUCTION